

**PAPER 1****Section A: Directed Writing**

[35 marks]

[ Time suggested: 45 minutes ]

1M4U is a national mission that promotes volunteerism among Malaysian youths. To promote 1M4U initiative, your school would like to encourage more students to do volunteer work. As a writer for your school magazine, you have been asked to write an **article** to promote the benefits of volunteer work to the students. Use the points below to help you write the article:

- Learn new skills
- Meeting new friends
- Build self-esteem and self-confidence
- Gain new experience
- Teach your skills to others
- Develop a sense of achievement

When writing the article, you should remember to:

- write the title and the writer of the article
- write in paragraphs
- to include details of your own
- use all the notes given

**Section B: Continuous Writing**

[ 50 marks]

[Time suggested: One hour]

Write a composition of **about 350 words** on **one** of the following topics.

1. Describe the most unforgettable person in school.
2. Working part time is good for students. Discuss.
3. What we can do to promote healthy living.
4. Write a story ending with:  
“ I will never forget this day for the rest of my life.”
5. Freedom

**PAPER 2**

Read the questions and circle the correct answers.

MANTRA MIND CENTRE will conduct a free introductory course for teenagers on Strategies to Release Stress Quickly and Boost Self-Esteem on 5<sup>th</sup> January 2012 at 9 a.m. at Danga Bayu Hotel. For further details, call Arjun at 0349776043.

1. The course will be beneficial to those who
- A are facing financial problems
  - B have worries and anxiety
  - C are self-conscious
  - D are indecisive

**MILES FOR SMILES**

The 5<sup>rd</sup> Miles For Smiles 2014 will culminate in a fun event on December 6 and 7 at Awana National Park. From now until January, all are invited to join in by registering teams of 10 for the event and to conduct fund-raising and health awareness among teenagers.

2. The main aim of organising the event is to promote
- A health awareness
  - B friendship
  - C sports
  - D fun

**Many hands make work light**

3. The idiom above is most likely to refer to
- A being creative and innovative in life.
  - B cooperating in completing chores.
  - C giving motivation to others.
  - D finishing work quickly.

It is worrying to read reports in the newspaper stating how some students are depressed due to exam pressure. Some students burn the midnight oil and tire themselves out so they can ace their examinations. The constant pressure from parents and the society did not help to resolve the issue.

I am worried that our students will be just drones who produce strings of good results but lack soft skills and have inability to socialize well. It shows the emphasis on the amount of competition that is now becoming unhealthy.

*Concerned*

4. The writer believes that students
- A need to work hard to score well in the examination
  - B are pressured to do extremely well in the examination
  - C are crazy to take too many subjects in the examination
  - D should burn the midnight oil to score well in their examination

<b>BREAKDOWN OF OFFENCES UNDER THE JPJ DEMERIT SYSTEM</b>		
<b>Number of motorists: 78,911</b>		
<b>Number of offences: 81,443</b>		
<b>The four most rampant offences</b>	<b>No. of offences</b>	<b>Demerit points</b>
<b>Speeding</b>	<b>31,912</b>	<b>4</b>
<b>Obstructing traffic</b>	<b>21,438</b>	<b>2</b>
<b>Road traffic offences</b>	<b>7,074</b>	<b>1</b>
<b>Beating traffic lights</b>	<b>3,500</b>	<b>5</b>

5. Based from the table above, which offence is the most common?
- A Speeding
  - B Obstructing traffic
  - C Road traffic offences
  - D Beating the traffic light

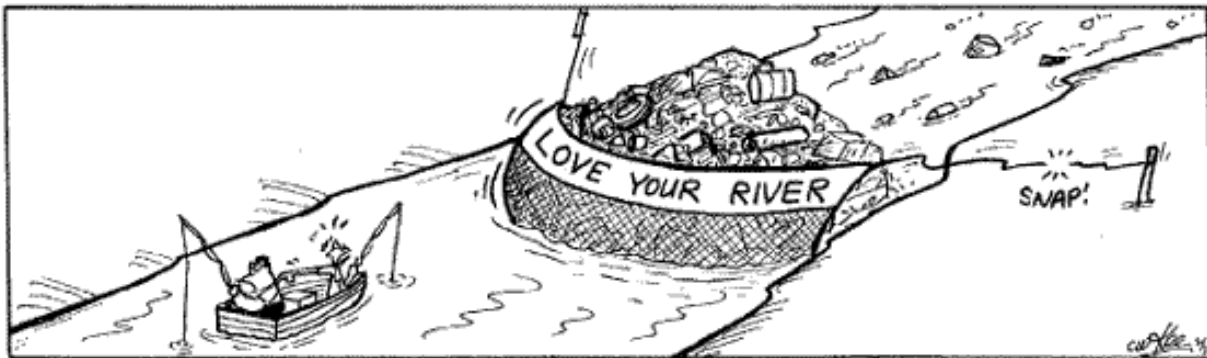


**When the going gets tough, the tough gets going.**

6. Based on the speech above, we can conclude that
- A we need to stop working when the situations get tough.
  - B things are tougher when people need to get going.
  - C we need to persevere amidst challenges.
  - D we need to go when things get tough.

**Facilities are for hotel patrons only**

7. From the sign above, we can conclude that
- A all the tourists are allowed to use the facilities
  - B hotel guests are allowed to use the facilities
  - C the facilities are restricted to hotel staff
  - D nobody is allowed to use the facilities



(Source: C.W.Kee's *It's a Durian's Life*)

8. From the comic strip below, we can conclude the 'Love Your River' campaign is a failure because
- A everyone is dumping rubbish into the river.
  - B of illegal fishing activity in the river.
  - C nobody is prosecuting the culprit.
  - D the river is already polluted.

**Questions 9 – 15 are based on the following passage.**

Processed foods get a bad rap as they are usually high in sodium and sugar and laden with unrecognisable ingredients. Reducing your reliance **\_(9)\_** packaged foods is a positive step to your health. **\_(10)\_**, if you are selective, there are packaged foods that are nutritious and easier to eat as well. Canned fruits **\_(11)\_** many of the nutrients found in fresh fruit and it is a low-cost alternative for seasonal fruits such as rambutan, blueberries, mangosteen and strawberries. As they **\_(12)\_** cost-effective, it will save you a lot of money as well. You can also find breakfast cereals that do not **\_(13)\_** too much sodium and sugar. There are also a number of good, prepared soup available **\_(14)\_** the fridge section at local supermarkets. **\_(15)\_** fresh foods and cook from scratch is advisable. However, consider time-saving processed foods in the pantry and freezer.

9. A in  
B at  
C on  
D over

10. A However  
B Then  
C Thus  
D Yet

11. A retaining  
B retained  
C retains  
D retain

12. A. is  
B. are  
C. were

13. A contain  
B contains  
C contained  
D containing

14. A in  
B from  
C across

15. A Eating  
B Eaten  
C Ate  
D Eat

## Section B

*Read the text below and complete the table that follows.*



One of the culprits of environmental pollution is the improper disposal of industrial waste. Toxic chemicals, oil, untreated waste and toxic fumes from manufacturing industries are discharged without being treated into water sources such as lakes, rivers and the sea and also released into the air. This causes large scale air and water pollution making water source unsuitable for human consumption and other needs. Aquatic organisms and creatures die. When fish die, this affects the livelihood of fishermen.

There are many methods that can be used to control the disposal of industrial waste. Environmental Laws and Regulations are effective because the factories are monitored constantly. Errant factory owners can be charged in court and fined. Factories are also required to install pollution control mechanisms and treatment mechanisms to minimise air and water pollution. Also, only licensed contractors are allowed to treat and dispose off hazardous wastes.

Read the passage and complete the graphic organiser below with the correct answer.

<b>IMPROPER DISPOSAL OF INDUSTRIAL WASTE</b>		
<b>Types</b>	16. _____	17. _____
<b>Problems caused</b>	18. _____	19. _____
	20. _____	21. _____
<b>Environmental Laws &amp; Regulations</b>	22. _____ _____	23. _____ _____
	24. _____ _____	25. _____ _____



**Section C**  
[ 25 marks]

**Questions 26 – 30** are based on the following passage.

Read the passage and answer the questions that follow.

- 1 Each year on April 8th at a solemn ceremony in Tokyo's Shibuya railroad station, hundreds of dog lovers do homage to the loyalty and devotion of an Akita dog, Hachiko, faithful pet of Dr. Eisaburo Ueno, a professor at Tokyo University.
- 2 Hachiko was born in Odate, Japan in November 1923, a white male Akita dog. At the age of two months, he was sent to the home of Professor Ueno of the Agricultural Department of the Tokyo University. The professor's home was in the Shibuya district of Tokyo. The professor commuted to the agricultural department in Komaba and the agricultural experimental station in Nishihara. 5
- 3 Tragedy struck on May 21, 1925, when Dr. Ueno did not return because he had suffered a stroke and died at the university. Hachiko was eighteen months old. The next day and for the next nine years, Hachiko returned to the station and waited for his beloved master before walking home, alone. Nothing and no one could discourage Hachiko from maintaining his nightly vigil. It was not until he followed his master in death, in March 1934, that Hachiko failed to appear in his place at the railroad station. 20
- 4 Hachiko was sent to homes of relatives or friends, but he always continued to await his master, who was never to return, at the train station. 25

- 5 The fidelity of Hachiko was known throughout Japan, owing to an article, "Faithful Old Dog Awaits Return of Master Dead for Seven Years" in the October 4, 1933 issue of Aashi Shinbun (Asahi News). Upon his death, newspaper stories led to the suggestion that a statue be erected in the station. Contributions from the United States and other countries were received. **30**
- 6 Today, the statue of the Akita, Hachiko, pays silent tribute to the breed's faithfulness and loyalty. A bronze statue of Hachiko was put up at his waiting spot outside the Shibuya railroad station, which is now probably the most popular rendezvous point in Shibuya. Hachiko was mounted and stuffed and is now on display at the Tokyo Museum of Art. **35**

*(Adapted from Lotus Road Journal, January 2011)*

26. From paragraph 1, who is Hachiko?

\_\_\_\_\_ [1 mark]

27. From paragraph 2,

(a) where was Professor Ueno working?

\_\_\_\_\_ [1mark]

(b) what was Professor Ueno's routine every day?

\_\_\_\_\_ [1 mark]

28. In paragraphs 3,

(a) the word 'tragedy' is referring to

\_\_\_\_\_ [1 mark]

(b) which phrase indicated Hachiko's demise?

\_\_\_\_\_ [1 mark]

29. From paragraph 4,

(a) give one characteristic portrayed by Hachiko?

\_\_\_\_\_ [1 mark]

(b) From paragraph 6, name two things that happened due to news featuring Hachiko.

(i) \_\_\_\_\_ [1 mark]

(ii) \_\_\_\_\_ [1 mark]

30. In your opinion, is Hachiko a good dog? Suggest ways we can educate the public to appreciate our domestic pets.

\_\_\_\_\_  
 \_\_\_\_\_ [2marks]

31. Based on the passage given, write a summary on:

- Hachiko's fidelity
- ‡ Recognition received by Hachiko

Credit will be given for use of own words but care must be taken not to change the original meaning

Your summary must

- be in continuous writing (not in note form)
- use materials from line 2 to line 35



**Section D**

[20 marks]

[Time suggested : 35 minutes]

32. Read the following stanzas of “**Are You Still Playing Your Flute?**” and answer the questions that follow.

Are you still playing your flute?  
 In the village so quiet and deserted  
 Amidst the sick rice field  
 While here it has become a luxury  
 To spend time watching the rain  
 Gazing at the evening rays  
 Collecting dew drops  
 Or enjoying the fragrance of flowers

Are you still playing your flute?  
 The more it disturbs my conscience  
 To be thinking of you  
 In the *hazard* of you  
 My younger brothers unemployed and desperate  
 My people disunited by politics  
 My friend slaughtered mercilessly  
 This world *is too old and bleeding*

**Zurinah Hassan**

- (a) Whom is the persona asking the question in line 1?

\_\_\_\_\_ [1 mark]

- (b) Why is the village so quiet and deserted?

\_\_\_\_\_ [1 mark]

- (c) From the last stanza, what does the word *hazard* symbolize?

\_\_\_\_\_ [1 mark]

- (d) If you were the persona, would you stay in the city or return to the village? Give a reason for your answer.

\_\_\_\_\_  
 \_\_\_\_\_ [2 marks]

33. The following are the novels studied in the Literature Component in English Language.

- |                     |                     |
|---------------------|---------------------|
| Catch Us If You Can | - Catherine McPhail |
| Step by Wicked Step | - Anne Fine         |
| The Curse           | - Lee Su Ann        |

Choose any one of the novels above and answer the question below.

Based on a novel you have read, write about **one** significant character that inspires you to be a better individual. Support your answer with evidence from the novel.

[15marks]

---

---

---

---

---

---

---

---

---

---

---

---

---

---

---

---

---

---

---

---

---

---

---

---

---