

**SECTION A**  
**( 10 marks )**

**QUESTION 1**

Each of the following sentences contains **an error**. Write the correct word in the space provided. An example has been given. The correct word must not change the meaning of the sentence.

- |     |   |       |
|-----|---|-------|
| e.g | Mr Azman <u>lose</u> his bag of money                             | lost  |
| 1   | The school held a walkathon to raise <u>fund</u> for the library. | ..... |
| 2   | During the <u>sell</u> , people came in hundreds to shop          | ..... |
| 3   | Constant <u>practise</u> made him a good speaker.                 | ..... |
| 4   | You must <u>respect to</u> your parents and obey them             | ..... |
| 5   | Vehicles have to get <u>permission</u> to enter Signapore.        | ..... |
| 6   | I look forward to <u>hear</u> from you soon                       | ..... |
| 7   | You must <u>evade</u> bad company for your own good.              | ..... |
| 8   | When you get into the car, <u>tie</u> your seatbelt.              | ..... |
| 9   | People who gamble <u>loose</u> money.                             | ..... |
| 10  | The child feel <u>of</u> his bed                                  | ..... |

**Section B**  
**(30 marks)**  
**Time Suggested 40 minutes**

**Banding Island**

Banding Island provides many opportunities for tourist to indulge in nature. To reach Binding Island, takes a 15 minutes boat ride from Marina jetty to Banding jetty. Some of interesting attractions around the island are Temenggor Waterfall , Swarnis Camp and Banding fishing spot.

**Temenggor Water Waterfall**

The waterfall is located 2 kilometers away from Banding Jetty. Listen to the loud roars of water that fall into the flat sandy area at the ground level. This area makes a perfect spot for picnics. Many families with children come here to have picnics. However, this place lacks public toilets.

**Sewarnis Camp**

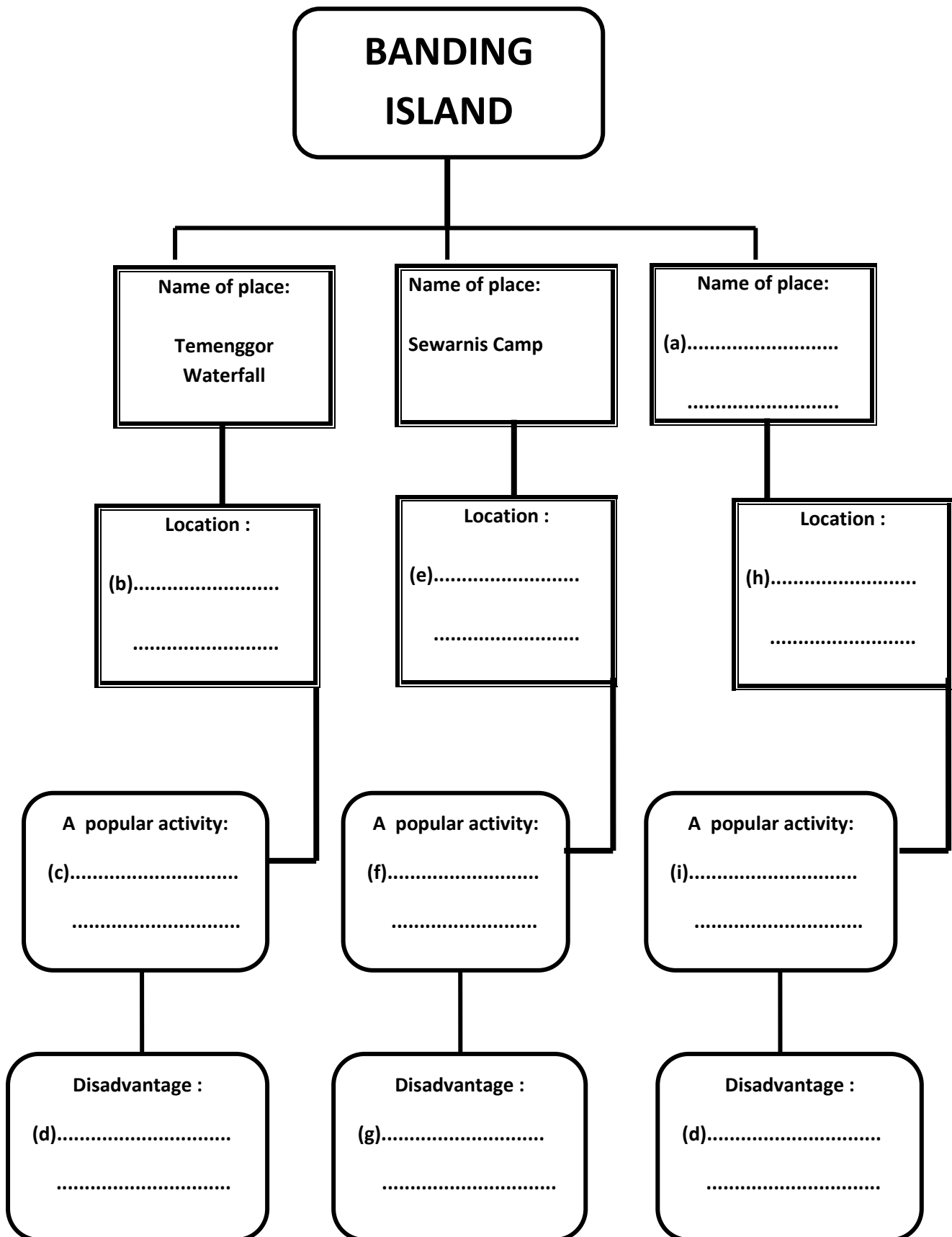
A 25 minutes motorcycle ride from Banding Jetty to the bank of Sewarnis River will give you a chance to set a tent in a large open area called Sewarnis Camp. It is a popular camping spot among those who like camping. However, please be aware of snakes.

**Banding Lake**

Banding Lake is usually crowded during weekends and public holidays. The lake is only 500 meters away from Temenggor Waterfall. It is a famous fishing spot. Please take note that those who want to fish must pay fee of RM 10 to the Wildlife Departmen. Many species of freshwater fish can be caught here.

**Questions (a) –(j)**

Using the information from the text, complete the following graphic organizer.



Read the text below and answer the following questions.

## GIVING GIFTS

We always give gifts to our parents, friends, siblings, relatives and teachers. We give gifts on occasions like Christmas Day, Chinese New Year, birthdays, birth of newborn, Mother's Day and others.

### *Guidelines in giving gifts*

- ✓ Offer gifts in pairs. An even number symbolizes good luck and a good ending
- ✓ When you return a gift from a guest, the gift you give him/her in future must be of greater value than his/hers.

### Taboos associated with gifts

- Never give a handkerchief for it *connotes* parting with a person forever.
- To give an umbrella would mean a break-up.
- Do not give jasmines or plum blossoms to businessmen for jasmines mean business losses and plum blossoms mean bad luck.
- It is very horrible to give a clock to someone on his birthday for it sounds like 'burying one's parent'.
- Never give things in pairs to a sick person for nobody wants misfortune twice.

Match words in Box A with their exact meaning in Box B

A

B

1. siblings
2. associated
3. parting
4. misfortune
5. occasions

- connected
- leaving
- mishap
- events or celebrations
- brothers and sisters

**b. Based on the text above, find the words that are related to the hypernyms (subcategory) given below:**

<b>i</b>	<b>Family</b>	<input type="text"/>	<input type="text"/>	<input type="text"/>
<b>ii</b>	<b>Flowers</b>	<input type="text"/>	<input type="text"/>	
<b>iii</b>	<b>Celebrations</b>	<input type="text"/>	<input type="text"/>	<input type="text"/>
		<input type="text"/>	<input type="text"/>	

**c**

Gifts that are forbidden













## **Answers Scheme**

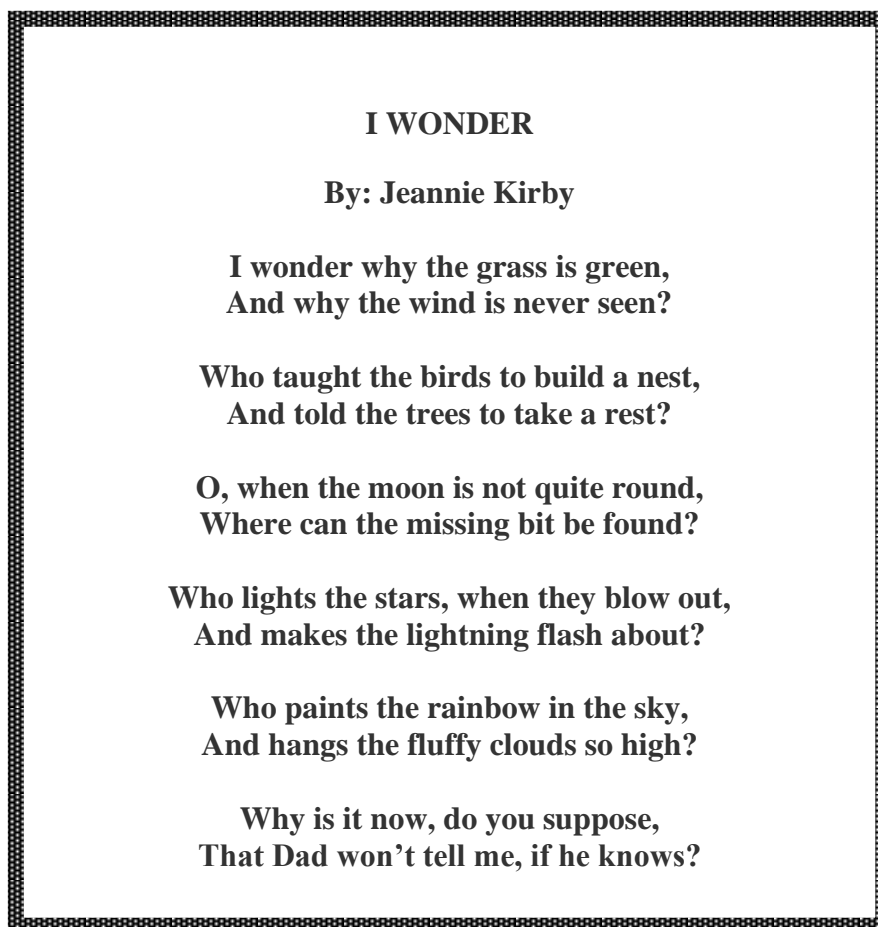
### **Part A**

#### **Answers**

1. funds
2. sale
3. practice
4. respect
5. permits
6. hearing
7. avoid
8. fasten
9. lose
10. off

#### Question 4

Read the poem below carefully. Then, answer questions (a) – (d).



(a) What does the word 'wonder' tell us about the persona?

.....(1 mark)

(b) In stanza two, what is the persona thinking about the birds?

.....(1 mark)

(c) In stanza 4, what does the word 'they' refer to?

.....(1 mark)

(d) If you were 'Dad', would you answer the questions asked by the persona?  
Give a reason.

.....  
.....

(5 marks)